

# Welcome to a business where **design** + **build** work in harmony

We understand the dynamics of build with the finesse of interior design and the practicalities of manufacturing. We call this build + create.

Our vision is to be the “go to” contractor for our customer’s complete requirements, chosen not always on price, but also for the solutions we provide – our performance, innovation, quality and professional integrity.

- £14 million+ turnover
- In-house manufacturing division
- In-house CAD design
- 600+ shop fit-outs completed
- Directly employed labour force who are fully trained, qualified and DBS checked
- In 2017, 78% of our work was repeat business
- Full national coverage
- CHAS / Constructionline / Altius / Alcumus certified





Commercial





COMMERCIAL

Code Computerlove



A full refurbishment and fit out of a grade 2 listed building located in Manchester's Northern Quarter.



## Scope of Works

- £350k redevelopment
- Completed in 8 weeks
- Mechanical, electrical, data
- Bespoke furniture
- Silicone jointed partitions
- Folding / movable walls









## Scope of Works

- Contract value £400,000
- Structural extensions
- TJM manufactured bespoke joinery installations
- Fast 12 week turnaround on a restricted site
- Specialist installation works including external fire glazing and curtain walling

A complete first floor refurbishment of 11 St James Square Manchester, to provide a contemporary new office space.







COMMERCIAL

401 Faraday



## Scope of Works

- Contract value of over £4 million
- Challenging rolling programme in an 80,000 sq. ft. part occupied building
- Glazed patio area with rustic oak planters and canopy
- All external groundworks including new car parks
- In-house manufactured reception, patio and office furniture fitted throughout

We were tasked to refurbish and re-fit all floors on one of the prestigious centrepiece office buildings at Birchwood Park, including kitchens and wet facilities.







COMMERCIAL

# 602 Your Housing



## Scope of Works

- Contract Value of £1.8 million
- Demanding 16 week programme
- Full M+E package
- Large external decked break-out area
- In-house manufactured furniture and features fitted throughout

An award winning three storey, 30,000 sq ft fit-out to our client's new build Head Office, incorporating their design team's cutting edge visions of a contemporary modern workspace.











COMMERCIAL

Syngenta



## Scope of Works

- £3 million project
- Full stripout and installation
- All new mechanical and electrical systems
- Bespoke Joinery
- Reception desk and breakout areas manufactured in-house using DuPont Corian

A £3 million strip out and full refurbishment of Crescent House Didsbury for Syngenta Global, one of the worlds largest agrochemical companies.







COMMERCIAL

# EFG UK Headquarters



## Scope of Works

- Exceptionally high standard of finish demanded
- Curved and textured surfaces throughout
- Very tight schedule to minimise disruption
- True bespoke meeting space incorporating our in-house manufactured seating
- Ingenious through-wall display spaces

A striking and original refurbishment of our client's existing offices in Warrington incorporating many different surfaces and finishes.







COMMERCIAL

# The Message Enterprise Centre



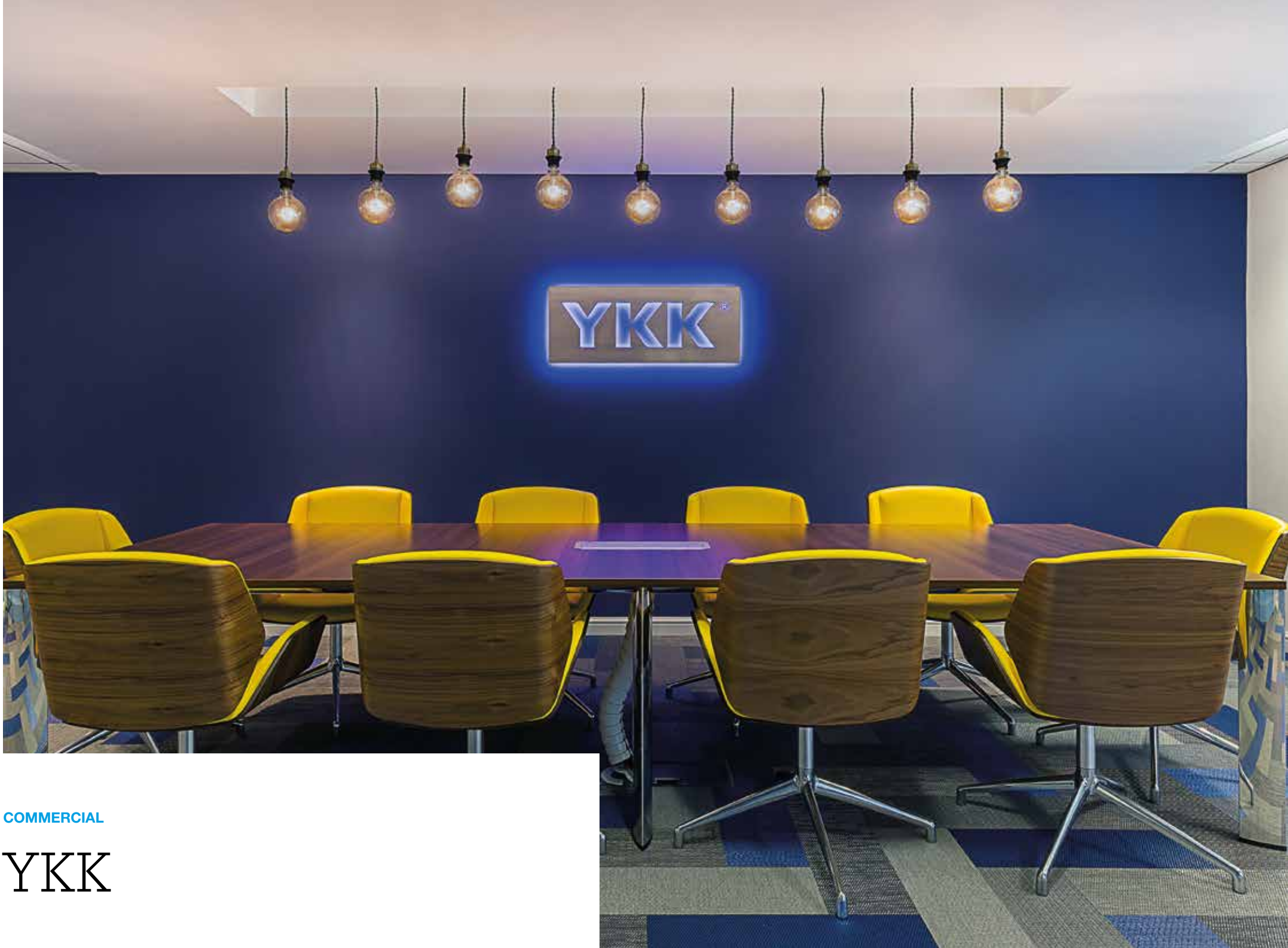
## Scope of Works

- 1.2 million re-development
- Asbestos removal
- Steel work
- Groundworks and bricklaying
- Roof
- Fully screeded floor
- Mechanical & electrical including air conditioning
- Bespoke Joinery
- Reception desks
- Furniture

A complete turnkey rip-out and installation for one of the North West's leading youth charities, completely re-imagining their existing commercial building.







COMMERCIAL  
YKK



## Scope of Works

- £160k refurbishment
- Strip out of old retail space
- Full new electrical services
- Bespoke joinery installations, manufactured in-house

A full refurbishment of old retail space, to provide contemporary office and refreshment zones for the staff and customers of the world's largest zip manufacturer.







COMMERCIAL

# Bents Garden & Home



## Scope of Works

- Contract value exceeding £500,000
- Working to a tight program of 8 weeks
- The complete transformation of an empty space with the inclusion of new walls, floor coverings, ceilings, manufactured joinery, electrical and air conditioning works

Refurbishment of previously unused space within the garden centre, creating a unique office interior for current and future employees of Bents.







Leisure





LEISURE

Tampopo



## Scope of Works

- Full refurbishment installation carried out
- Manufactured joinery – including a zinc bar
- Full mechanical and electrical installation

A full refurbishment to complement the redevelopment of the Corn Exchange in Manchester.











LEISURE

# Castle Street Townhouse



## Scope of Works

- £180k refurbishment
- Stripped back to its original shell
- Full plumbing and electrical installations
- Original designer features, manufactured in-house

A demanding brief to sympathetically re-work the interior of the listed Bank of England building on Castle Street in Liverpool City Centre.







LEISURE

# Robinsons Brewery



We are privileged to be one of Robinsons preferred refurbishment specialists, working on their complete estate from Carlisle to Mid-Wales.



## Scope of Works

- Award winning interior designs incorporating Robinsons in-house designer specifications
- Utilising designer wallpaper, tiles and features sourced from across Europe
- Complete bars manufactured by TJM to the most contemporary designs
- Working in harmony with Robinsons Cellar Services to ensure a perfect fit every time
- Hotel rooms refurbished with designer features to the highest standard
- Weekend and night working to ensure deadlines are met
- Full external refurbishment packages including the renovation and sympathetic replacement of listed features
- Working in harmony with existing Landlords on partial refurbishments to ensure zero downtime in trade





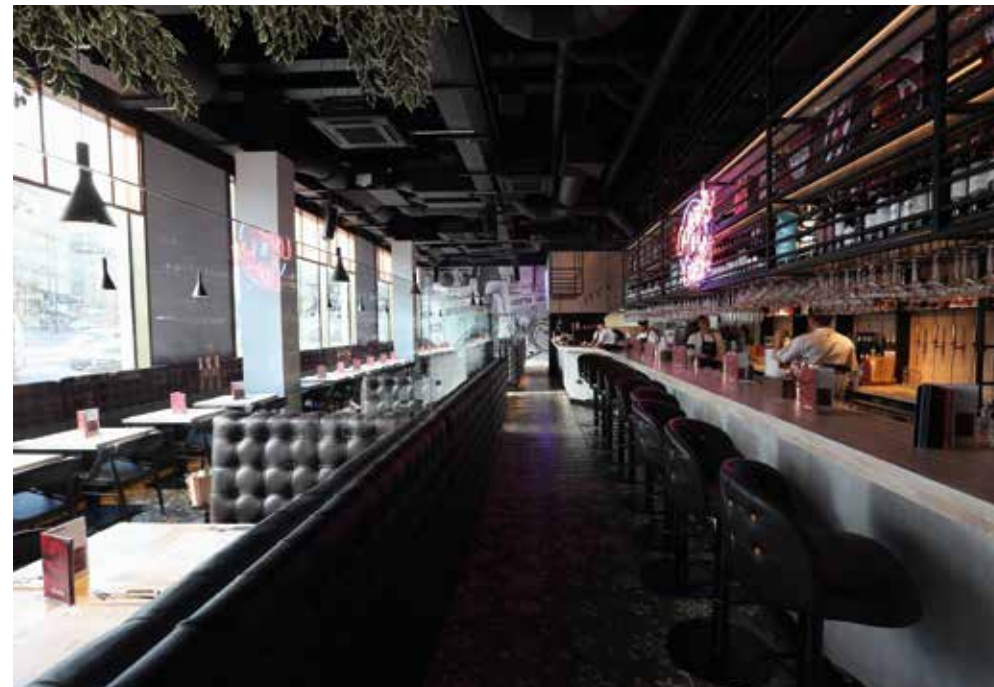






LEISURE

# The Laundrette



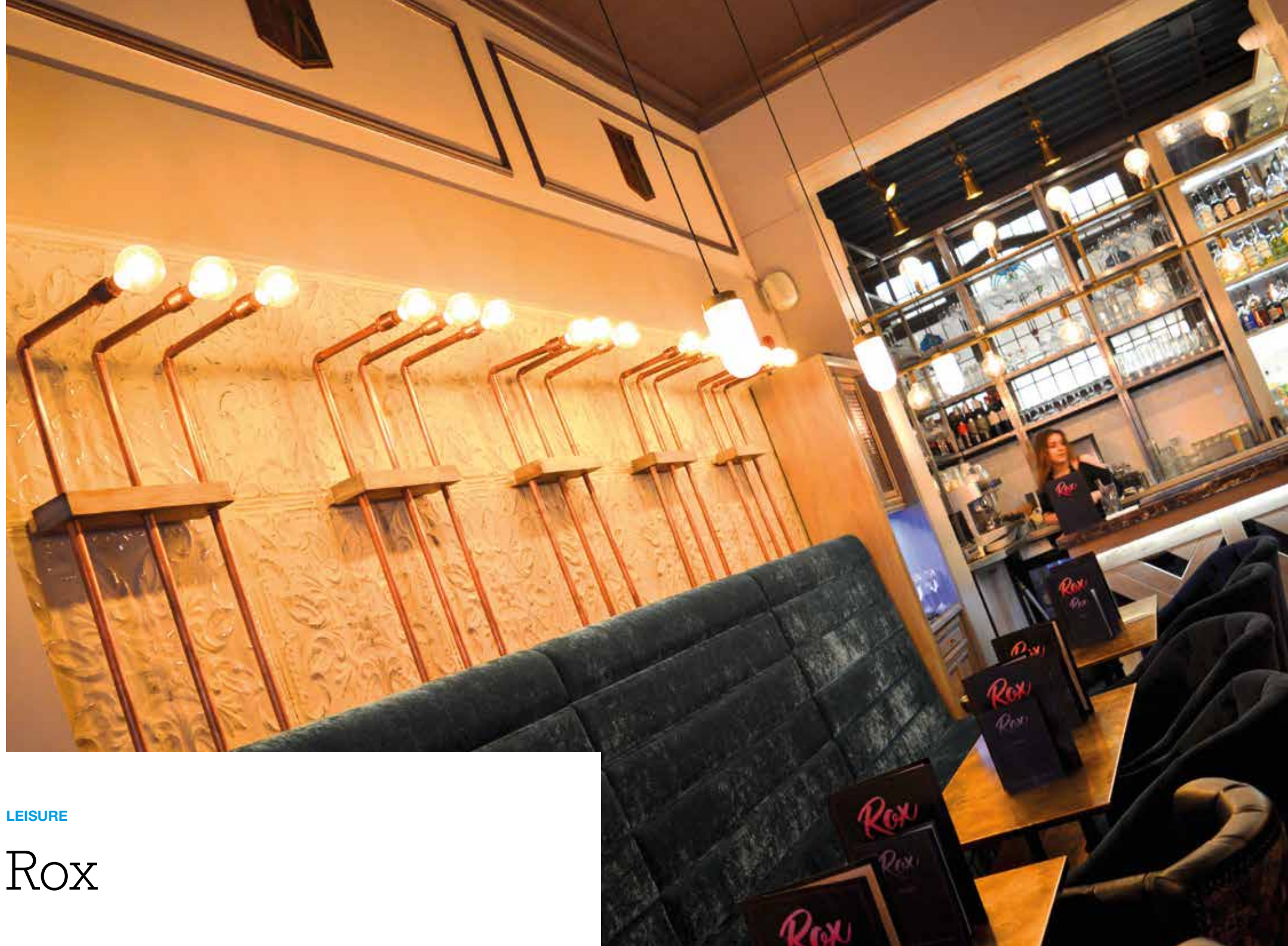
## Scope of Works

- £1.1 million contract value
- Installation of new structural mezzanine floor
- TJM manufactured joinery installations throughout
- Tight 14 week programme including dynamic design revisions
- Full designed and installed M+E package

In the heart of Newcastle city centre, TJM transformed the ground floor of a new student accommodation building into the Laundrette chain's latest opening.







LEISURE

Rox



## Scope of Works

- Under 3 week turnaround to minimise trade downtime
- Night working to ensure completion dates met
- TJM manufactured bespoke joinery installations
- TJM designed M+E package

TJM return to Castle Street to undertake the transformation of the old Pinch Bar into Rox, a retro cocktail bar by renowned designers DV8.







LEISURE

# Sanctuary Tap



## Scope of Works

- Contract value £120,000
- Premises stripped back to brick
- Night and weekend working
- Architecturally designed bespoke joinery features
- New façade and pavement cellar drop installed

We return yet again to complete the full strip-out and refit of the old Furness Building Society, linking once more with designers DV8.







LEISURE

# Duxbury Park



## Scope of Works

- 18 week design and build
- Contract value of £1.2 million
- Challenging design – diverting underground culverts
- All external groundworks
- New dance floor and bar areas

A turnkey project to provide Duxbury Golf Club's new retail shop and clubhouse.







Retail





RETAIL

# Thomson Next Generation Holiday Design Store



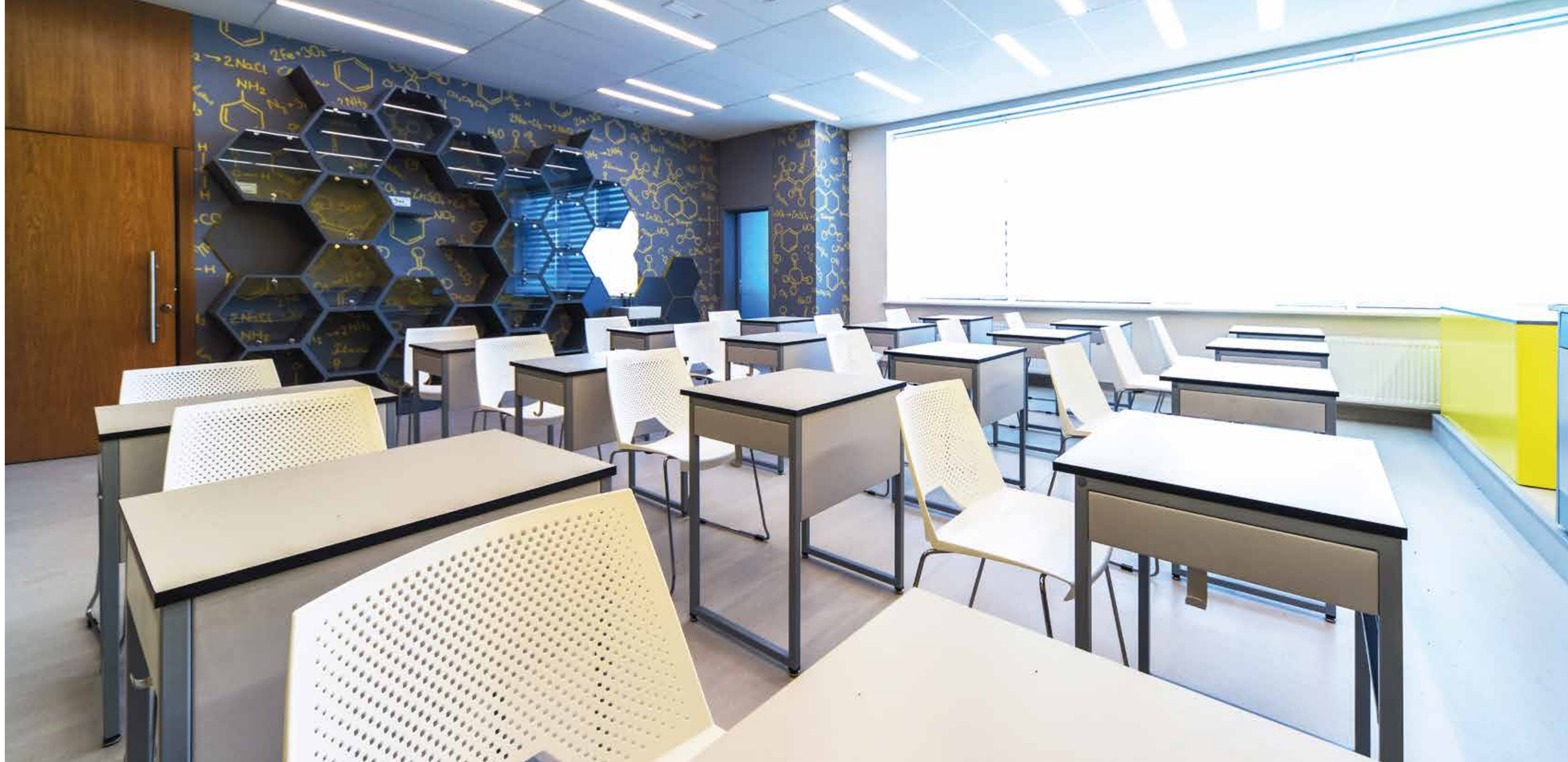
## Scope of Works

- Sole UK furniture manufacturer for Thomson Travel Group stores
- Contract in place until 2020
- One of Thomsons Travel Groups exclusive national fit-out contractors
- Working 7 days per week and 24 hours per day
- Annual framework turnover in excess of £3 million

A rolling programme of store refurbishments throughout the UK and Ireland.







Education





### Scope of Works

- Over £5 million contract values to date
- Working every summer since 2007
- Working through term time with minimal disruption
- Internal and external works including glass and aluminium
- Full home economics block fit out incorporating laboratory grade furniture

### Scope of Works

- £0.25 million contract expanded to £0.45 million
- Contract completed throughout the winter months with minimal disruption
- New land drains and access routes completed
- Matching new brickwork to old sourcing bricks nationwide
- Completed on-time and on budget despite challenging conditions



#### EDUCATION

## Cheadle Hulme High School

TJM are a constant feature in Cheadle Hulme High's annual works. The school has an enviable reputation and demands facilities to match. We have also recently been awarded the £2.8 million contract for the schools new entrance and music block, to be complete by spring 2018.

#### EDUCATION

## St Margaret's Academy Liverpool

Tasked initially to provide a 3-storey external disabled lift shaft and associated works, the projects expanded to include roofing and drainage works.





### Scope of Works

- £0.5 million contract
- Returning the internal layout to bare walls
- Complete refit with modern design and warm oak veneered feature doors
- Challenging site with access restrictions and working sports facility next door
- Re-engineering the external structure to accommodate the modern cladding

### Scope of Works

- New build project
- £0.5 million contract
- Challenging weather conditions
- Innovative design



#### EDUCATION

## Flixton Grammar School for Girls

The complete strip-out and refurbishment of a two-storey classroom block, which included modern exterior cladding to produce a modern contemporary finish.

St Michaels Academy is located in Chorley, Lancashire. TJM were awarded the contract to build and fit-out the new front extension to the school.

#### EDUCATION

## St Michael's Academy Chorley





About TJM Projects



TJM Interiors



TJM Construction



TJM Manufacturing

We are a specialist interiors, construction and manufacturing company providing a complete multi-discipline service from inception and design to completion and handover.

Established in March 2004 we have gained an enviable reputation for quality, reliability and completing projects on time and on budget.

We are able to offer a range of services to suit any project from £5,000 to £5 million, with a team of dedicated and qualified Project Managers overseeing each and every project. Each project also has a Director allocated as the ultimate oversight, so you can be assured that every contract runs as smoothly as possible.

Interior fit-out is the core from which our business has developed. Working in all business sectors, TJM interiors has provided fit-out packages for commercial, retail, leisure and private facilities across the UK.

We continue to provide our original one-stop facility for even the most demanding of fit-out projects. From inception to completion, TJM interiors will cover all aspects of your project from bare walls to finished floors and the chairs you sit on.

Working with a full range of Blue Chip clients, Local Authorities, Retail and Education sectors you can be assured we have the skills, experience and knowledge to successfully fill any clients' demands.

Our construction division was established as the natural business progression from our original core, to offer a full refurbishment service, bringing all trade disciplines together in-house.

The construction division provides a complete range of services that you would expect from an established company, from ground works and civils to building and finishing work.

Our team of experienced Project Managers and Quantity Surveyors will oversee every aspect of your project, ensuring the highest standards are applied every time and your projects come in on time on budget.

Our manufacturing division has been the inevitable next stage in our expansion to complement and supply both the interiors and construction divisions.

Working from our dedicated 18,000 sq ft facility in Atherton, Manchester, a skilled workforce manufactures our clients' bespoke furniture and joinery requirements using specialist computer controlled machinery.

The full in-house CAD design service ensures we interpret all instructions to the fullest extent and ensures the smooth transition from design to final installation and handover.

We are accredited solid surface processors and installers for products such as Hi-Macs and Corian. This can give any project an extra dimension, and along with our modern spray facility means we can offer a vast range of stain and paint finishes to fit any design brief.



# TJM Projects Limited

10 Westside Industrial Estate  
Jackson Street, Saint Helens  
Merseyside WA9 3AT

Unit B, Bag Lane, Atherton  
Greater Manchester M46 0LY

**01744 21212**

**info@tjmprojects.co.uk**

**www.tjmprojects.co.uk**

## Build + Create

