



Welcome to a business where Design, Build and Manufacture work in harmony.

£12 million+ turnover

Fleet of branded modern vehicles

In-house manufacturing division

In-house CAD design

500+ shop fit-outs completed

All operatives CRB checked and holding CSCS cards

In 2015 80% of our work was repeat business

Full national coverage

ISO 14001/CHAS/Constructionline/Altius certified

about tjm projects

We are a specialist interiors, construction and manufacturing company providing a complete multi-discipline service from inception and design to completion and handover.

Established in March 2004 we have gained an enviable reputation for quality, reliability and completing projects on time and on budget.

We are able to offer a range of services to suit any project from £5,000 to £5 million, with a team of dedicated and qualified Project Managers overseeing each and every project.

Each project also has a Director allocated as the ultimate oversight, so you can be assured that every contract runs as smoothly as possible.

**We understand the dynamics of build
with the finesse of interior design and
the practicalities of manufacturing.
We call this Build – Create.**

our vision

Our vision is to be the “go to” contractor for our customer’s complete requirements, chosen not always on price, but for the solutions we will provide – our performance, innovation, quality and professional integrity.

What does this mean?

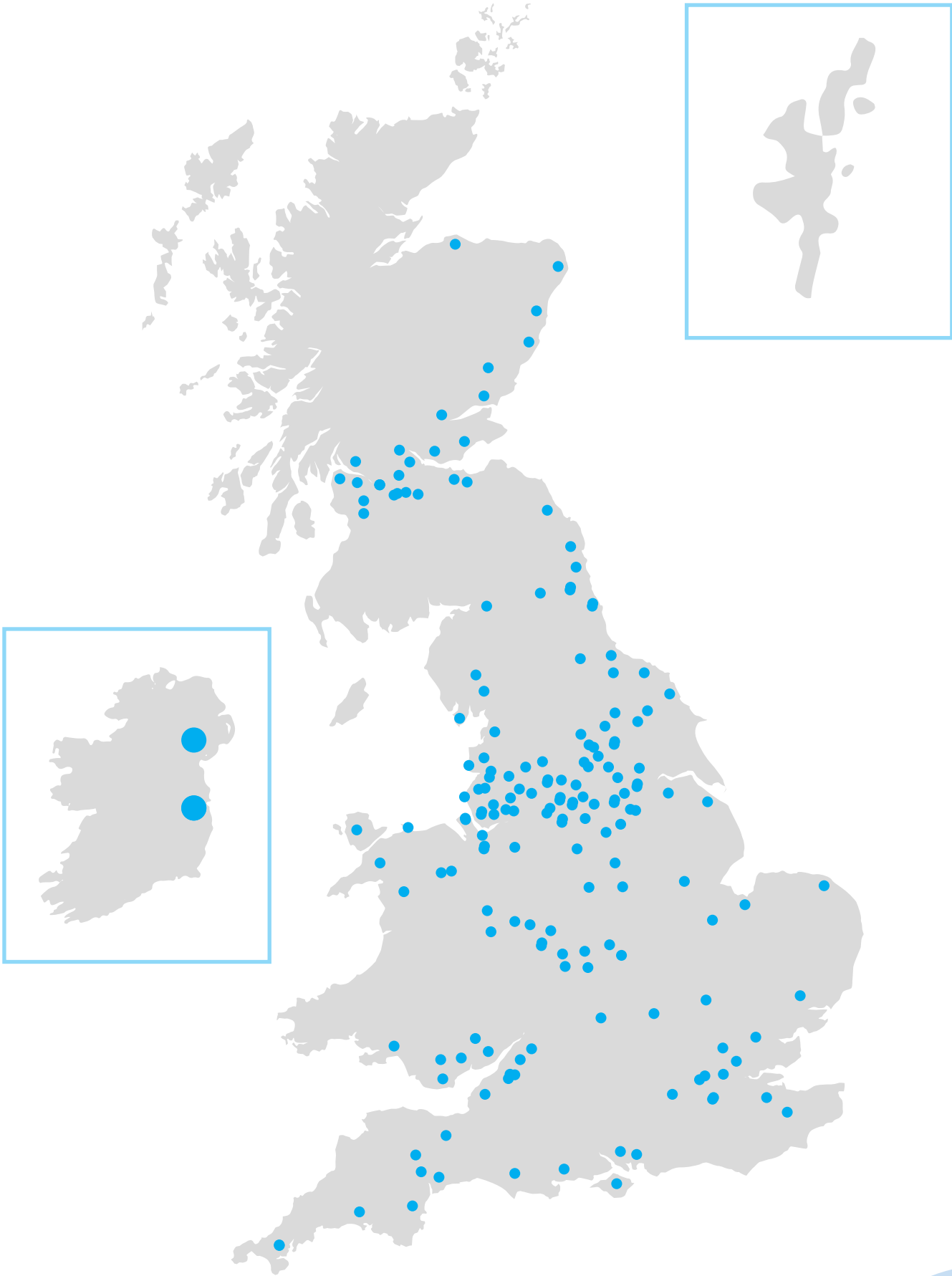
- Developing long-term relationships with our customers and other stakeholders
- Maintaining a balanced portfolio of work so that we remain agile in the marketplace and can respond to changes
- Targeting contract works from £2k to £5 million
- Exploring new ideas and offering new services.
- Focusing on solutions and identifying what we can do - not what we can't!
- Seeking out innovation – seeking out and investing in new ways of doing things – nurturing good ideas!
- Constant monitoring to ensure we identify and deliver to our targets
- Continuing, as part of our embedded culture, our commitment to staff development and training programmes

Our Values

- To behave as a family, providing support to our customers, staff, supply chain and stakeholders
- To always act ethically and do the right thing, regardless of personal consequence
- To take the wider view in decision-making, look to the longer term benefit rather than short term gains
- To provide stable employment and the ability to improve for all our staff
- To enjoy what we do and have fun in doing it!

Our nationwide coverage

Airdrie	Dolgellau	Liverpool	Sale
Alderley Edge	Dorchester	Livingston	Scarborough
Altrincham	Dublin (Eire)	Llandudno	Scunthorpe
Anglesey	Dumbarton	London	Sheffield Wednesday
Ashford	Dunfermline	Lytham	Sheffield United
Ashton-in-Makerfield	Edinburgh	Macclesfield	Sheffield Meadow Hall
Ashton Under Lyne	Elgin	Maidstone	Shetland Isles
Barnsley	Exeter	Manchester	Shipley
Barrow-in-Furness	Exmouth	Market Harborough	Shrewsbury
Barry	Falcon (Eire)	Marple	Stalybridge
Beckenham	Falkirk	Matlock	Stirling
Beddgelert	Falmouth	Mexborough	Sunderland
Belfast	Fareham	Milton Keynes	Sutton Coldfield
Berwick-upon-Tweed	Fishponds	Monks Cross	Swansea
Birkdale	Forfar	Morley	Taunton
Birkenhead	Formby	Motherwell	Teesside
Birmingham	Fort Kinnaird	New Biggin	Telford
Blackburn	Fulwood	Newcastle	Thornbury
Blackpool	Glasgow	New Mills	Tiverton
Bolton	Glenrothes	New Ollerton	Torquay
Bournemouth	Grantham	Newport	Trafford Centre
Bowness	Greenock	North Allerton	Uxbridge
Bradford	Grimsby	Northampton	Warrington
Bridge of Dee	Hamilton	Nottingham	Wellingborough
Bristol	Harrogate	Oldham	Wigan
Broughty Ferry	Huddersfield	Ormskirk	Willenhall
Burton on Trent	Huyton	Oswestry	Wilmslow
Bury	Ilford	Otley	Winsford
Carlisle	Ipswich	Oxford	Wirral
Chelmsford	Isle of Wight	Paisley	Wishaw
Chepstow	Kendal	Perth	Woking
Cheshire Oaks	Killingworth	Peterborough	Wombwell
Chester	Kilmarnock	Peterhead	Worksop
Chesterfield	Kings Lynn	Plymouth	Worle
Chingford	Kingston-upon-Thames	Pontypridd	York
Chorley	Kingswood	Portlethen	
Congleton	Knowle	Portsmouth	
Coventry	Lancaster	Prescot	
Cromer	Leeds	Preston	
Cumbernauld	Leicester	Redcar	
Cwmbran	Leigh	Richmond	
Darlington	Leven	Rotherham	



Commercial

401 Faraday

We were tasked to refurbish and re-fit all floors on one of the prestigious centrepiece office buildings at Birchwood Park, including kitchens and wet facilities.



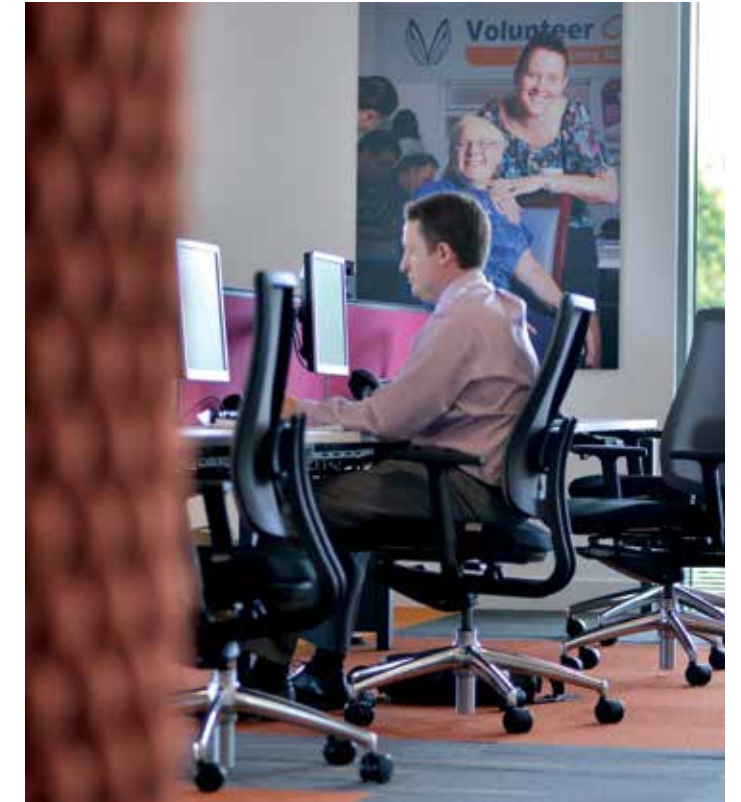
Scope of Works

- Contract value of over £4 million
- Challenging rolling programme in an 80,000 sq. ft. part occupied building
- Glazed patio area with rustic oak planters and canopy
- All external groundworks including new car parks
- In-house manufactured reception, patio and office furniture fitted throughout

Commercial

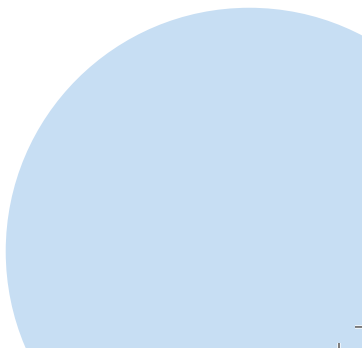
602 - Your Housing

An award winning three storey, 30,000 sq ft fit-out to our client's new build Head Office, incorporating their design team's cutting edge visions of a contemporary modern workspace.



Scope of Works

- Contract Value of £1.8 million
- Demanding 16 week programme
- Full M+E package
- Large external decked break-out area
- In-house manufactured furniture and features fitted throughout





Commercial

EFG – UK Headquarters

A striking and original refurbishment of our client's existing offices in Warrington incorporating many different surfaces and finishes.



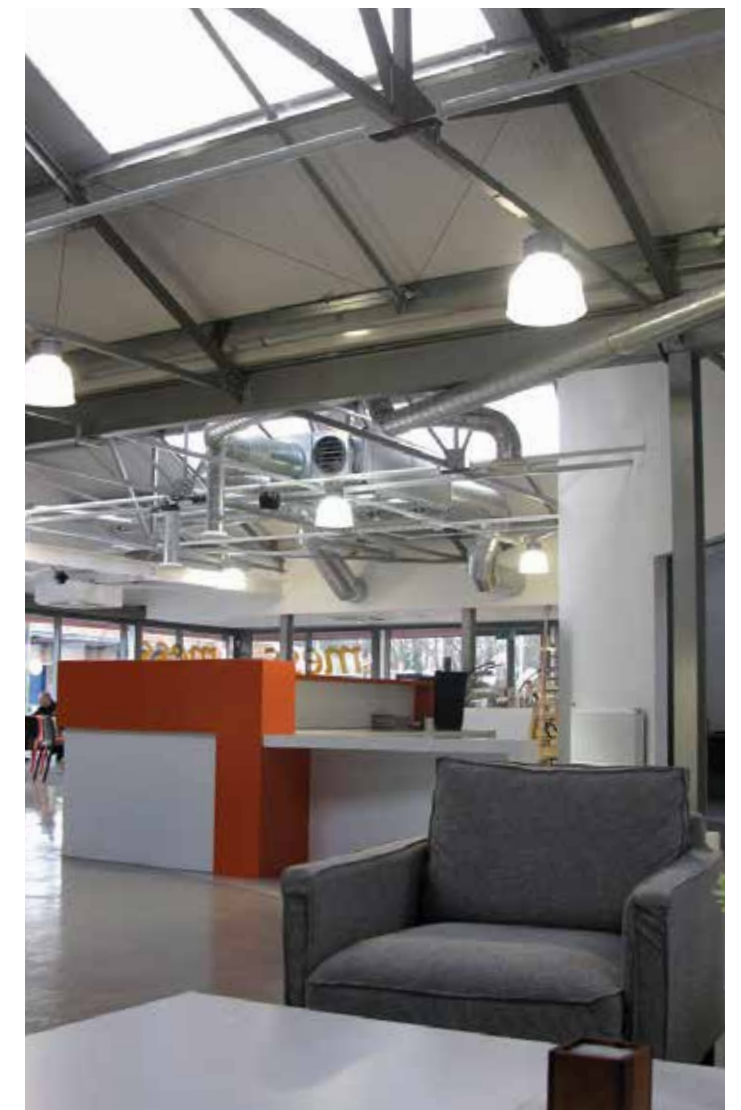
Scope of Works

- Exceptionally high standard of finish demanded
- Curved and textured surfaces throughout
- Very tight schedule to minimise disruption
- True bespoke meeting space incorporating our in-house manufactured seating
- Ingenious through-wall display spaces

Commercial

The Message Enterprise Centre

A complete turnkey rip-out and installation for one of the North West's leading youth charities, completely re-imagining their existing commercial building.



Scope of Works

- 1.2 million re-development
- Asbestos removal
- Steel work
- Groundworks and bricklaying
- Roof
- Fully screeded floor
- Mechanical & electrical including air conditioning
- Bespoke Joinery
- Reception desks
- Furniture

Commercial

Liverpool One Stop Shops

An on-going roll out of refurbished City Council offices, utilising a light and bright environment with warm real wood desks and workstations.



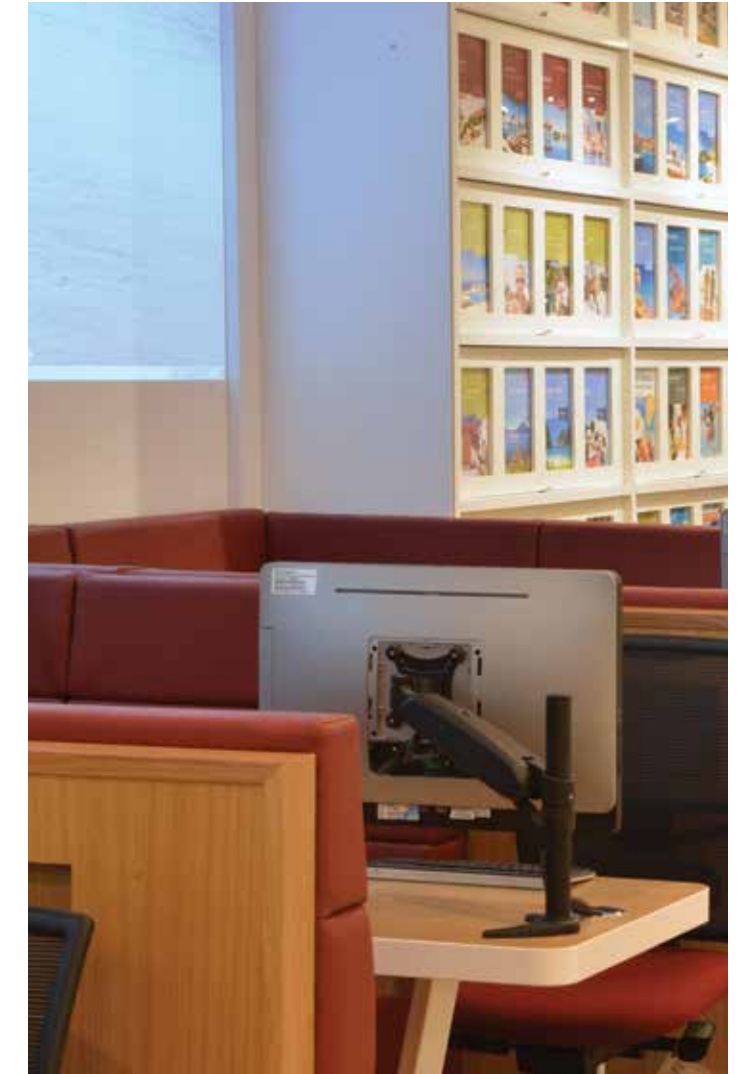
Scope of Works

- A rolling £2 million programme
- Short timescales to minimise disruption to public services
- Working to tight budget demands
- Striking desk and workstation designs manufactured by TJM
- Full M+E package

Retail

Thomson Next Generation Holiday Design Store

A rolling programme of store refurbishments throughout the UK and Ireland.



Scope of Works

- Sole UK furniture manufacturer for Thomson Travel Group stores
- New 3 year contract from January 2015
- One of 2 exclusive Thomson Travel Group national fit-out contractors
- Working 7 days per week and 24hrs per day
- Annual framework turnover in excess of £3 million

Retail

Duxbury Park

A turnkey project to provide Duxbury Golf Club's new retail shop and clubhouse.



Scope of Works

- 18 week Design and Build
- Contract value of £1.2 million
- Challenging design – diverting underground culverts.
- All external groundworks
- New dance floor and bar areas

Leisure

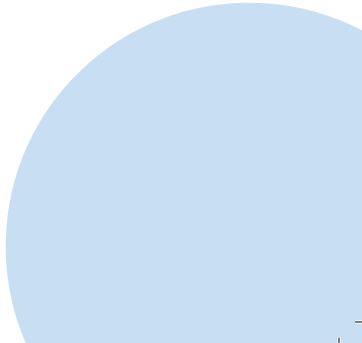
Tampopo

A full refurbishment following redevelopment of the corn exchange.



Scope of Works

- Full refurbishment installation carried out
- Manufactured joinery – including a Zinc bar
- Full mechanical and electrical installation



Pub and Hotel

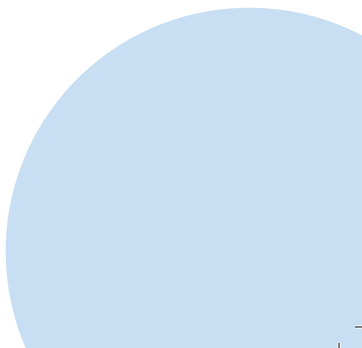
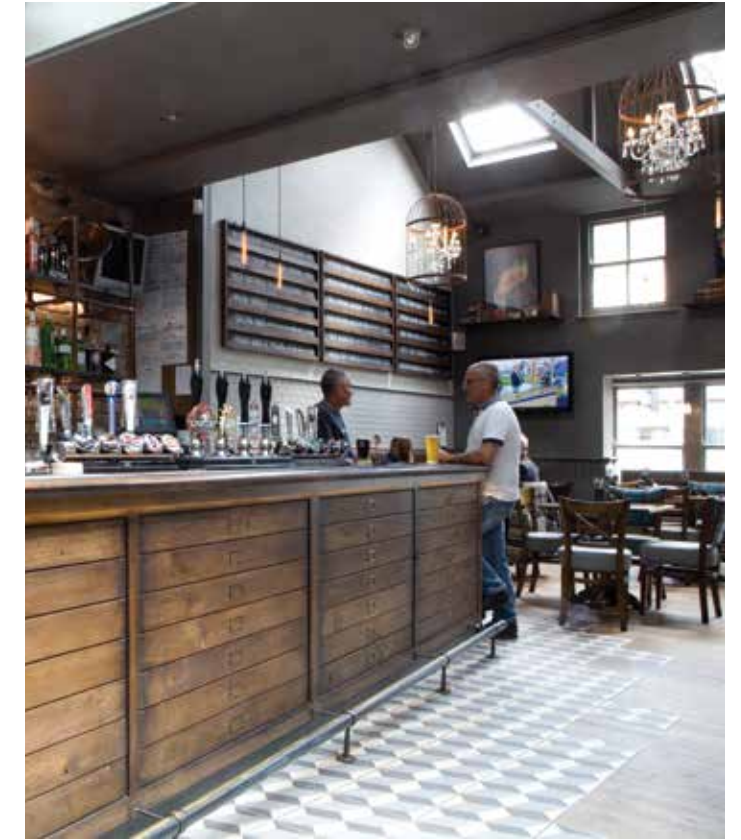
Robinsons Brewery

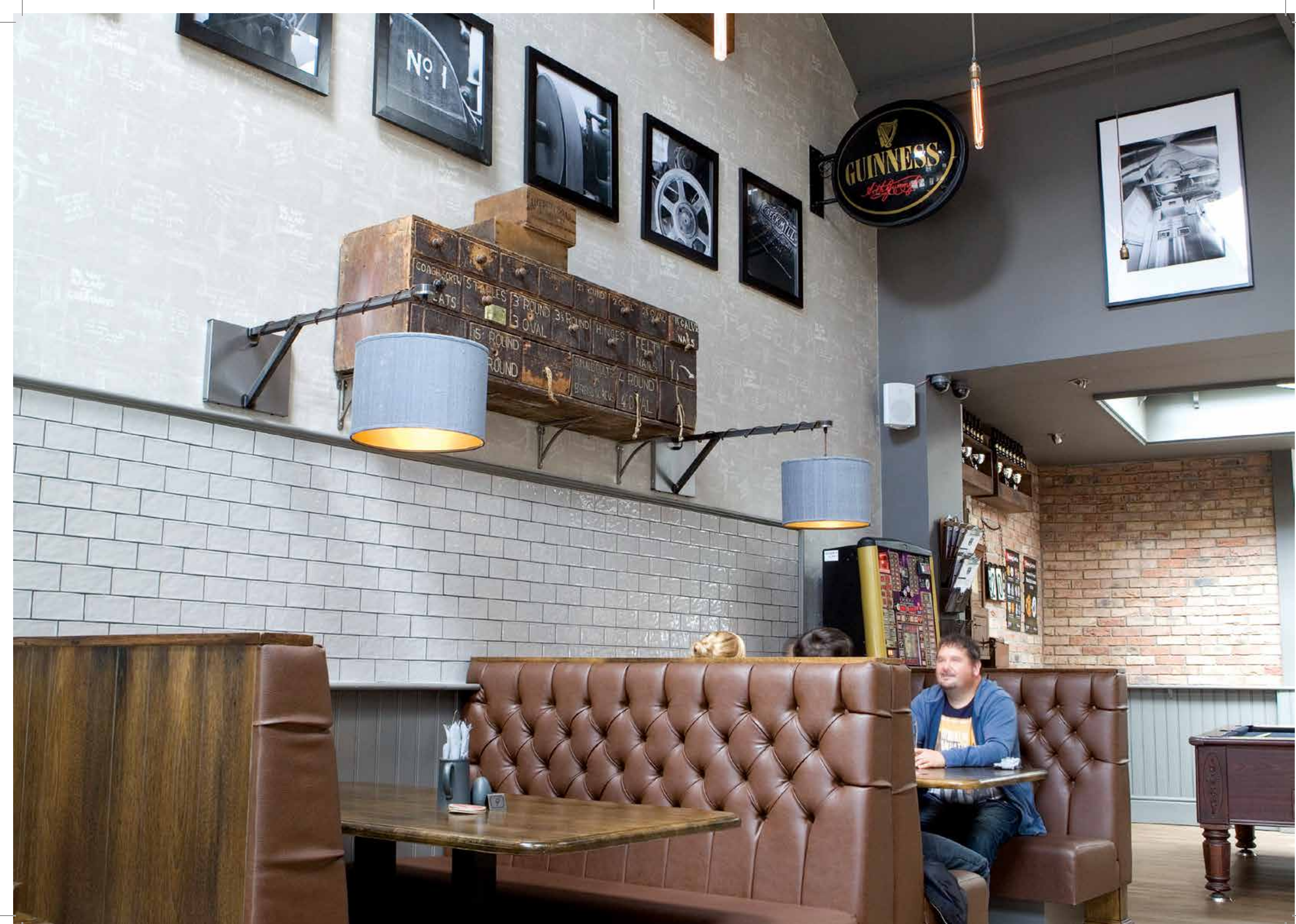
We are privileged to be one of Robinsons preferred refurbishment specialists. Working on their complete estate, from Carlisle to Mid-Wales, to exceptionally demanding and tight schedules we have completed to date over £2 million of developments with a continual pipeline of projects.



Scope of Works

- Award winning interior designs incorporating Robinsons in-house designer specifications
- Utilising designer wallpaper, tiles and features sourced from across Europe
- Complete bars manufactured by tjm to the most contemporary designs
- Working in harmony with Robinsons Cellar Services to ensure a perfect fit every time
- Hotel rooms refurbished with designer features to the highest standard
- Weekend and night working to ensure deadlines are met
- Full external refurbishment packages including the renovation and sympathetic replacement of listed features
- Working in harmony with existing Landlords on partial refurbishments to ensure zero downturn in trade





Education

Cheadle Hulme High School

tjm are a constant feature in Cheadle Hulme High's annual works. The school has an enviable reputation and demands facilities to match.

Scope of Works

- £0.25 million contract expanded to £0.45 million
- Contract completed throughout the winter months with minimal disruption
- New land drains and access routes completed
- Matching new brickwork to old sourcing bricks nationwide
- Completed on-time and on budget despite challenging conditions

St Margarets Academy Liverpool

Tasked initially to provide a 3-storey external disabled lift shaft and associated works, the projects expanded to include roofing and drainage works.

Flixton Grammar School for Girls

The complete strip-out and refurbishment of a two-storey classroom block, which included modern exterior cladding to produce a modern contemporary finish.

Scope of Works

- £1.5 million contract to date
- Working every summer since 2007
- Working through term time with minimal disruption
- Internal and external works including glass and aluminium
- Full home economics block fit out incorporating laboratory grade furniture

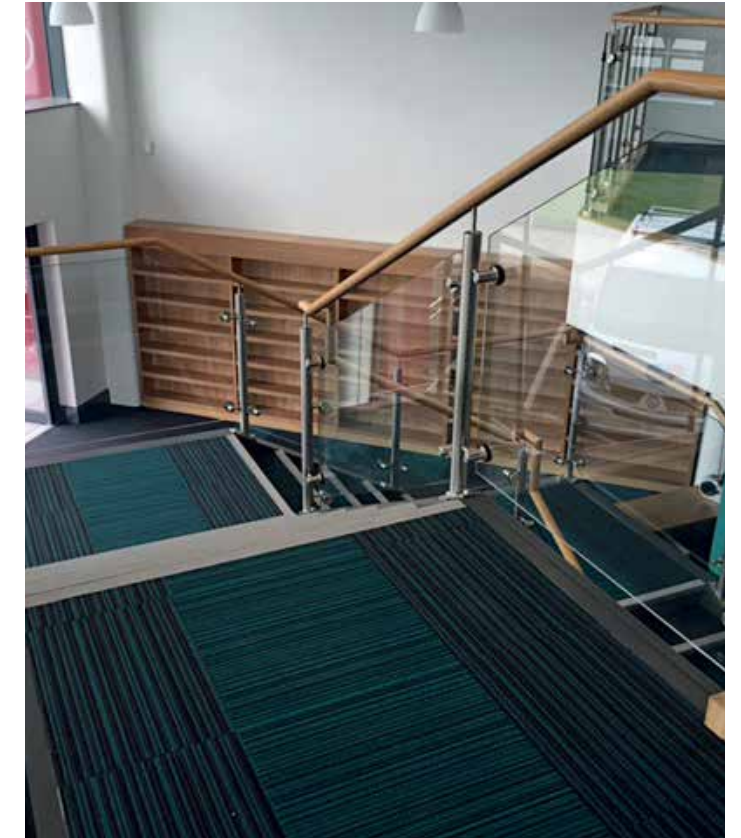
Scope of Works

- £0.5 million contract
- Returning the internal layout to bare walls
- Complete refit with modern design and warm oak veneered feature doors
- Challenging site with access restrictions and working sports facility next door
- Re-engineering the external structure to accommodate the modern cladding

Education

St Michael's Academy Chorley

St Michaels Academy is located in Chorley, Lancashire. tjm were awarded the contract to build and fit-out the new front extension to the school.



Scope of Works

- New build project
- £0.5 million contract
- Challenging weather conditions
- Innovative design

Residential

Specialising in challenging high-end domestic architectural projects that require a contractor with the full range of skills and services to manage these demanding designs.



- A range of residential projects completed to date
- Individual contract values to £0.6 million
- Team approach liaising with the client's specified architects and designers
- Cutting edge external designs
- Internal features utilising timber, glass, marble and composites
- Flexible work approach to accommodate any client's evolving needs

tjm interiors

Interior fit-out was the core from which our business has developed. Working in all business sectors tjm interiors has provided fit-out packages for commercial, retail, leisure and private facilities across the UK.

We continue to provide our original one-stop facility for even the most demanding of fit-out projects. From inception to completion, tjm interiors will cover all aspects of your project from bare walls to finished floors and the chairs you sit on.

Working with a full range of Blue Chip clients, Local Authorities, Retail and Education sectors you can be assured we have the experience and knowledge to successfully fill any clients' demands.

tjm construction

Our construction division was established as the natural business progression from our original fit-out division to offer a full refurbishment service, bringing all trade disciplines together in-house.

Construction provides the complete range of services you would expect from an established company, from ground works and civils to building and finishing work.

Our team of experienced Project Managers and Quantity Surveyors will oversee every aspect of your project ensuring the highest standards are applied every time and your projects come in on time on budget.

tjm manufacturing

Our manufacturing division has been the inevitable next stage in our expansion to complement and supply both the interiors and construction divisions.

Working from our dedicated 15,000 sq. ft. facility in Atherton, Manchester a skilled workforce manufactures our clients' bespoke furniture and joinery requirements utilising specialist computer controlled machinery.

The full in-house CAD design service ensures we interpret all instructions to the fullest extent and ensures the smooth transition from design to final installation and handover.

We are fully accredited solid surface processors and installers for popular ranges such as Hi-Macs and Corian – thus giving any project an extra dimension, and our modern and fully equipped spray facility gives the choice of a vast range of stains and paint finishes to fit any design brief, whether that be on veneer, solid wood or MDF.



tjm projects limited

10 Westside Industrial Estate,
Jackson Street, Saint Helens
Merseyside WA9 3AT

Tel. 01744 21212
info@tjmprojects.co.uk

www.tjmprojects.co.uk

Build + Create

